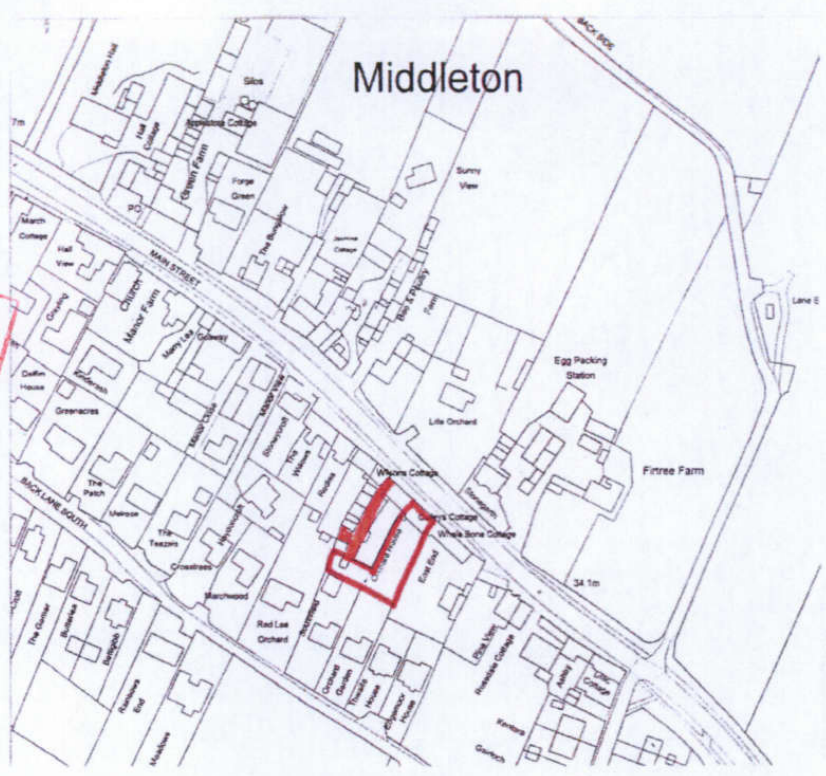


THIS COPY HAS BEEN MADE BY OR WITH THE AUTHORITY OF RYEDALE DISTRICT COUNCIL PURSUANT TO SECTION 47 OF THE COPYRIGHT, DESIGN AND PATENTS ACT 1988 UNLESS WITHOUT THE PRIOR PERMISSION OF THE COPYRIGHT OWNER. THIS COPY MUST NOT BE COPIED OR REPRODUCED IN ANY MANNER WITHOUT THE PRIOR PERMISSION OF THE COPYRIGHT OWNER.

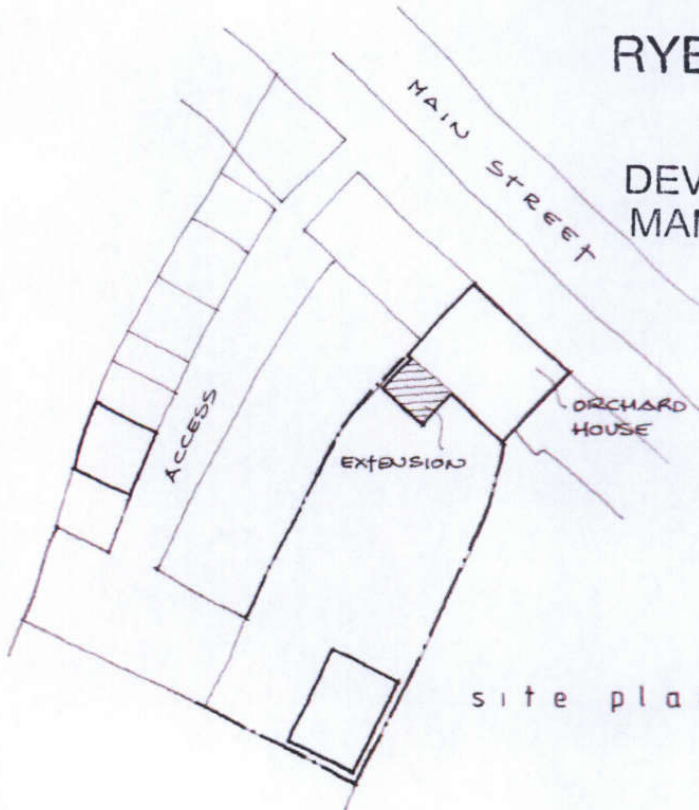


location plan 1 : 2500

RYEDALE DM

28 MAY 2015

DEVELOPMENT
MANAGEMENT



site plan 1 : 500